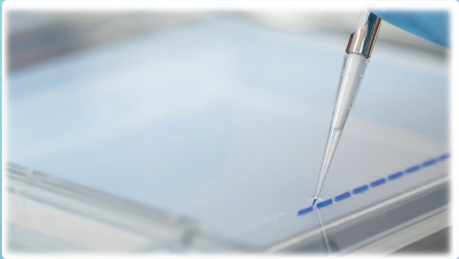
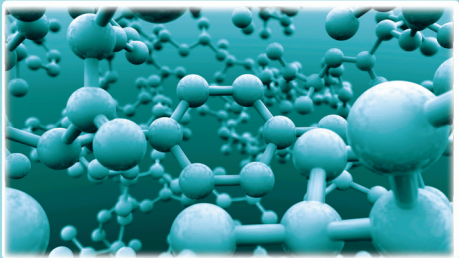
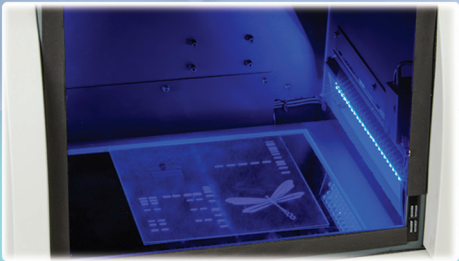
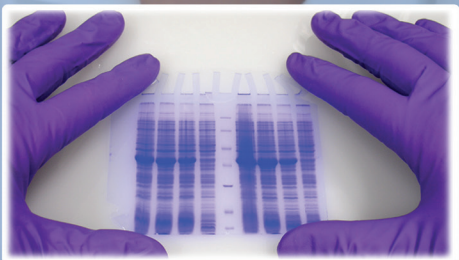


ENDURO™ GDS TOUCH

GEL DOCUMENTATION SYSTEM



- 5MP high resolution camera
- No installation needed
- Exceptional blue light sensitivity
- Easy and intuitive to use
- Compact with large field of view

simply reliable

ENDURO™ GDS TOUCH

GEL DOCUMENTATION SYSTEM

The ENDURO GDS Touch is an integrated system for DNA and protein analysis and gel documentation. It is based on the GDS but incorporates an integrated tablet PC with a three position filter wheel with both EPI-Blue and EPI-White light sources standard. The market has shown a growing demand for being able to image DNA at higher wavelengths so as to prevent DNA nicking for downstream applications. The powerful EPI-Blue light can discriminate bands stained with SYBR® sAFE up to 3 levels of magnitude greater than imagers using blue light conversion screens. Just like the ENDURO GDS, there is no need to focus the camera. Installation and operation is simple and acquisition of image can be achieved in 4 touches of the tablet. The Enduro GDS Touch is ideal for life science research labs who need a flexible system with a small footprint.

SPECIFICATIONS

Camera Resolution	5 MP
Lens	Manual F 1.4 Lens (No Focus Required)
Field of View	20 cm x 24 cm
Standard Illumination	EPI-Blue and white light, 302 or 365 nm UV transillumination
Pull out UV	For visualizing and cutting bands
System Controls	Integrated touchscreen computer
Filter	Three position (EtBr included)

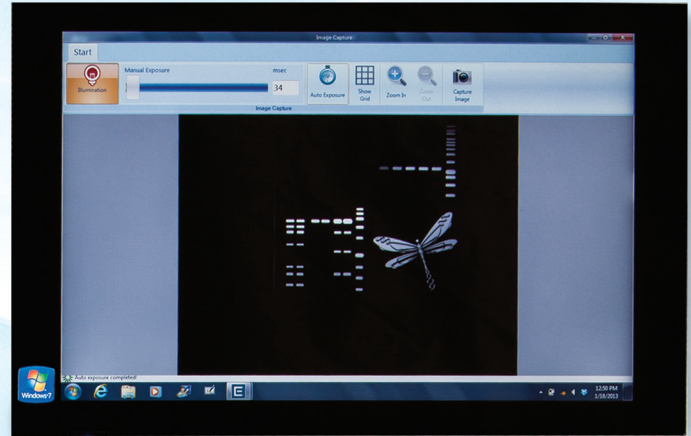


IMAGE CAPTURE SOFTWARE

Annotation and email features	Yes
5 minute auto shut-off of UV	Yes
UV on/off in software	Yes
White light on/off in software	Yes
Blue light on/off in software	Yes
Touchscreen/tablet compatible	Yes
Communications	USB Tablet has WiFi and Bluetooth options
Footprint	14" by 12.5" x 25"



Three cabinet light options

ORDERING INFORMATION

Catalog No.	Description
GDST-1302	ENDURO GDS Touch Imaging System, 302 nm - Universal Voltage
GDST-1365	ENDURO GDS Touch Imaging System, 365 nm - Universal Voltage
GDS-12018	Clear Gel Tray
GDS-12019	White Light Conversion Tray
GDST-676R	Red filter (676 nm)
GDST-572G	Green Filter (572 nm)
GDST-497B	Blue Filter (497 nm)

31 Mayfield Avenue Edison-NJ 08837-USA

US toll free: 888-LABNET1(522-6381)

phone:+1-732-417-0700

email:Labnetinfo@corning.com

www.labnetinternational.com