

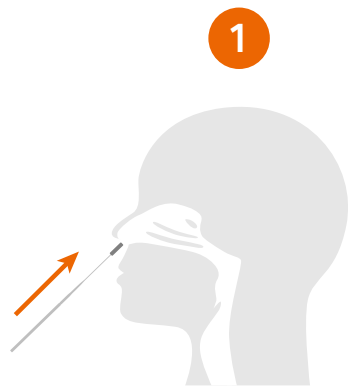
Simple-to-follow procedure with results in 15 minutes

# CLINITEST<sup>®</sup> Rapid COVID-19 Antigen Test

siemens-healthineers.com



## Nasal Specimen Collection



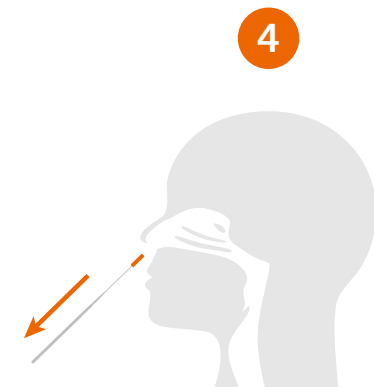
1  
Using the sterile swab provided, carefully insert the swab into one nostril.



2  
The swab tip should be inserted 2–4 cm until resistance is met. Roll the swab 5 times inside the nostril.



3  
Using the same swab, repeat this process inside the other nostril, again rolling swab 5 times.

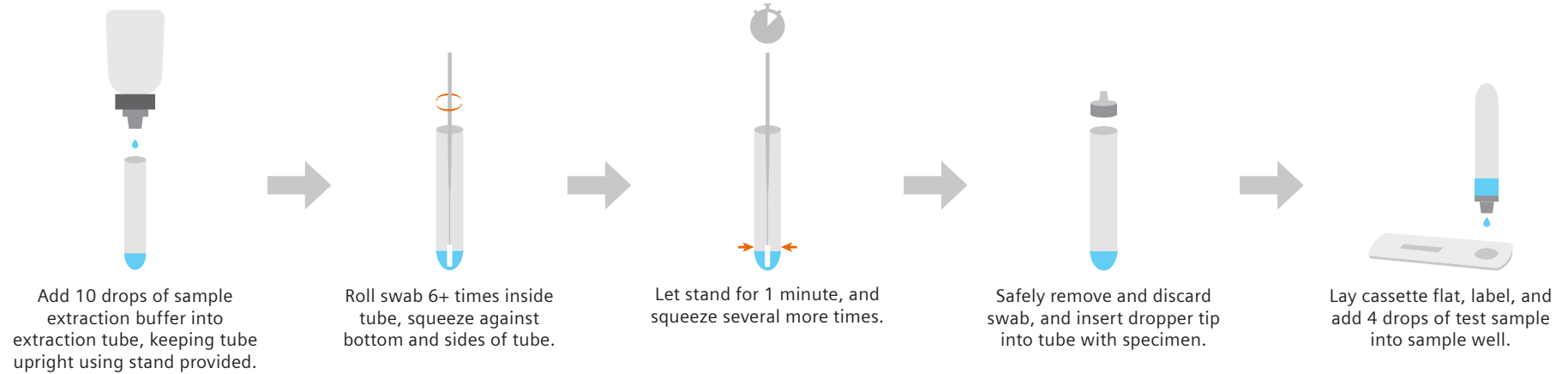


4  
Withdraw the swab from the nasal cavity and follow local instructions for specimen processing.

If processing specimen, please refer to next page →

*Do not use test kit after the expiration date.*  
Bring specimen and test components to room temperature if needed (15–30°C), and use the appropriate personal protective equipment.

## Specimen Processing



## Results Interpretation

Results will be ready in 15 minutes. Do not interpret the result after 20 minutes.



CLINITEST is a trademark of Siemens Healthcare Diagnostics Inc., or its affiliates. All other trademarks and brands are the property of their respective owners.

Not available for sale in the U.S. Product availability may vary by country.  
Distributed by Siemens Healthineers.

### Siemens Healthineers Headquarters

Siemens Healthcare GmbH  
Henkestr. 127  
91052 Erlangen, Germany  
Phone: +49 9131 84-0  
siemens-healthineers.com

### Published by

Siemens Healthcare Diagnostics Inc.  
Point of Care Diagnostics  
2 Edgewater Drive  
Norwood, MA 02062-4637  
USA  
Phone: +1 781-269-3000